



Cellix Ltd.

Inish Device

Portable Hematology Analyzer

- Fast, reliable, label-free Cell and Particle analysis:
→ detection, characterization & viability
- Portable, low cost device; works off 12V car battery → new applications possible.
- Technology as sensitive as traditional flow cytometry; benchmarked against gold standards: BD's Accuri and Sysmex XP-300. CVs < 3%.





Inish Device: Haematology Analyzer – Validation Data for RBC and WBC counts with 3-part differential

Benchmarking Inish against Sysmex XP-300:

- Benchmarking trial with 10 healthy volunteers:
- Triplicates of each measurement
- Parameters: RBC count, WBC count, lymphocyte %, monocyte%, granulocyte %, lymphocyte count, monocyte count, granulocyte count

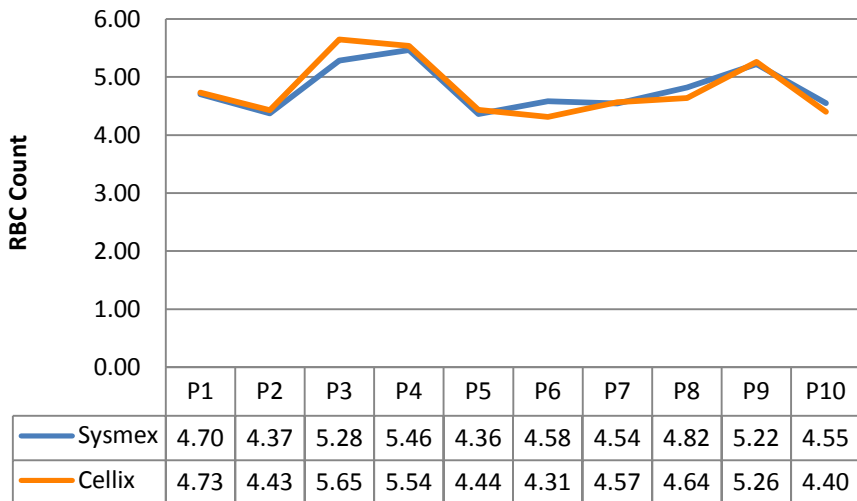


Inish Device: Haematology Analyzer – Validation Data for RBC and WBC counts with 3-part differential

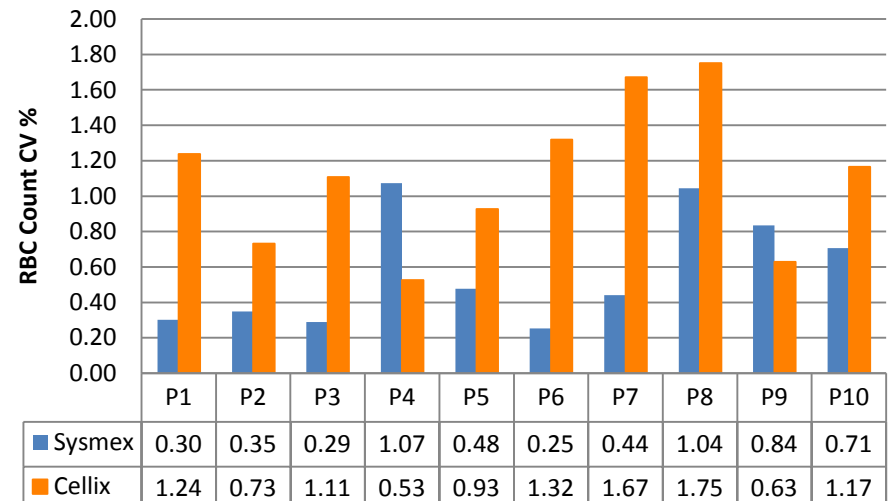
Benchmarking Inish against Sysmex XP-300:

- **RBC count:** Cellix's Inish correlates with Sysmex XP-300
- Inish: average CV of 1.11%
- Sysmex: average CV of 0.58 %

Red Blood Cells Count in $10^6/\mu\text{l}$



RBC Count, CV %



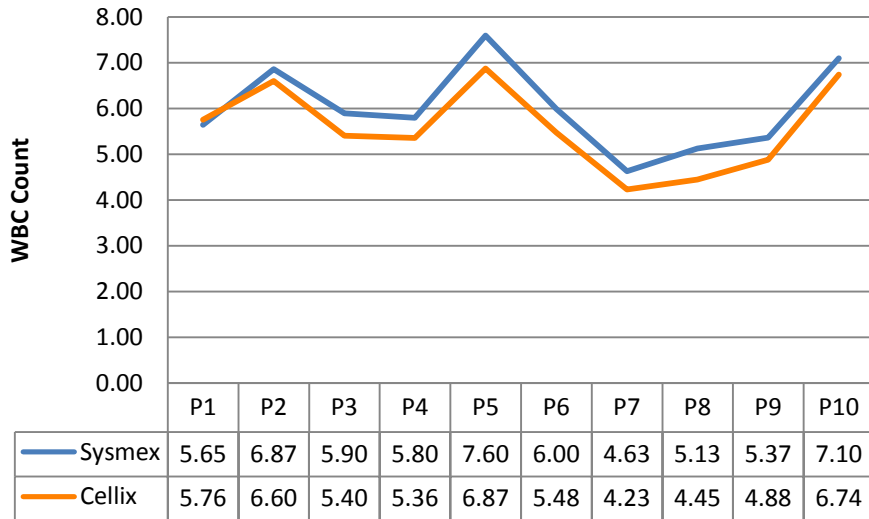


Inish Device: Haematology Analyzer – Validation Data for RBC and WBC counts with 3-part differential

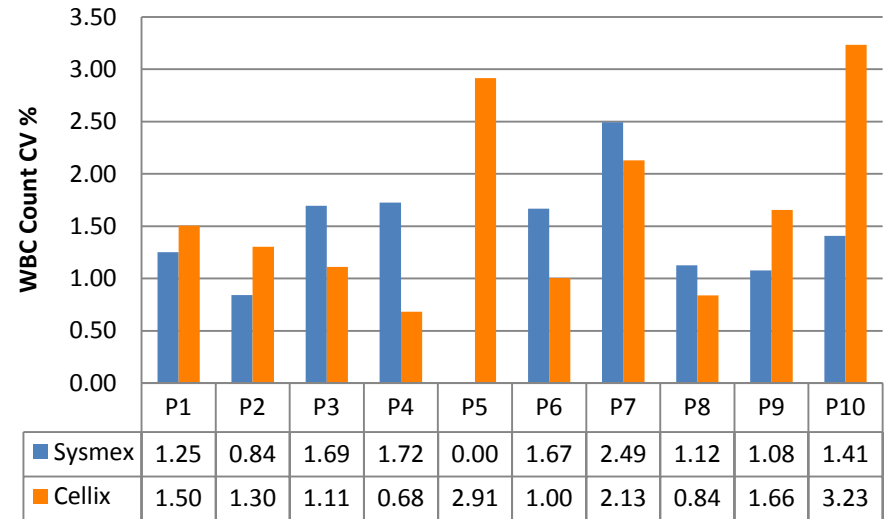
Benchmarking Inish against Sysmex XP-300:

- **WBC count:** Cellix's Inish correlates with Sysmex XP-300
- Inish: average CV of 1.64%
- Sysmex: average CV of 1.33 %

White Blood Cell Count *10³/μl

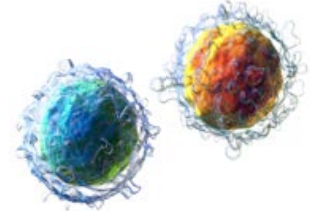


White Blood Cell Count CV %

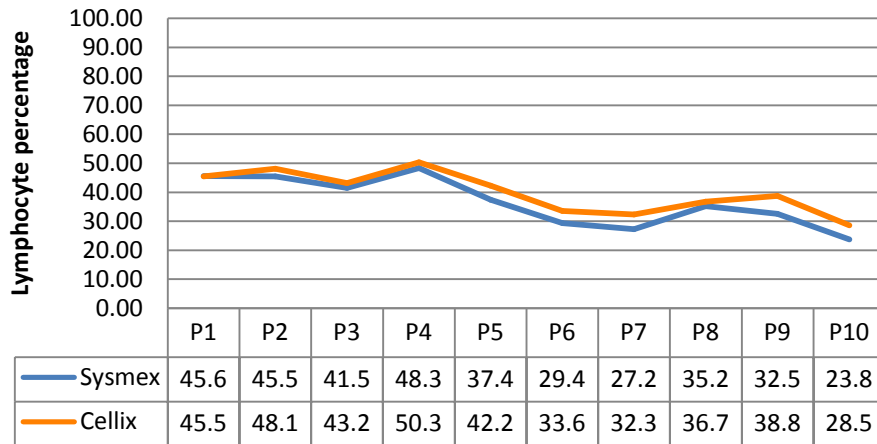


Benchmarking Inish against Sysmex XP-300:

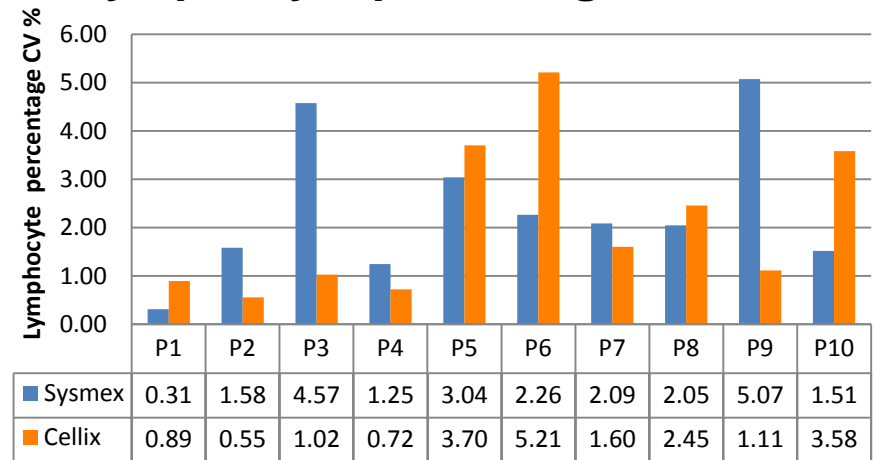
- **Lymphocyte %:** Cellix's Inish correlates with Sysmex XP-300
- Inish: average of CV 2.09%
- Sysmex: average CV of 2.37%



Lymphocyte percentage



Lymphocyte percentage, CV %

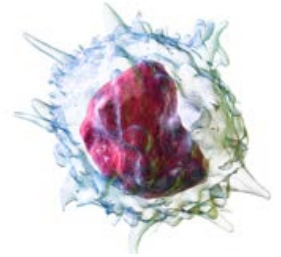




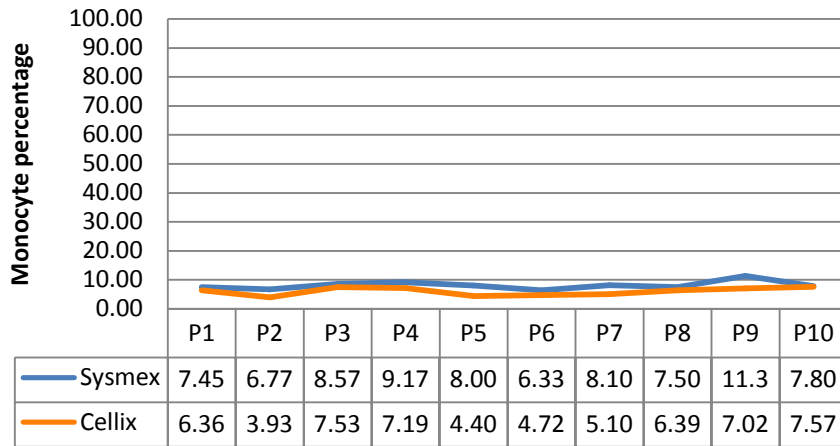
Inish Device: Haematology Analyzer – Validation Data for RBC and WBC counts with 3-part differential

Benchmarking Inish against Sysmex XP-300:

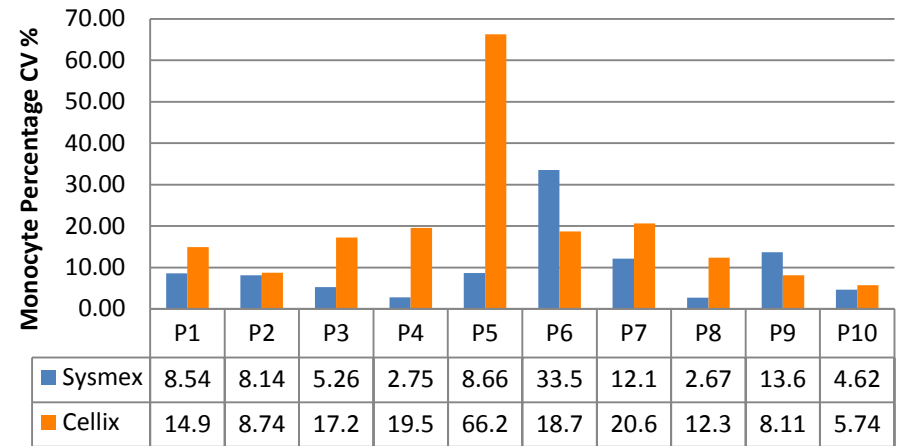
- **Monocyte %:** Cellix's Inish correlates with Sysmex XP-300
- Inish: average of CV 19.23%
- Sysmex: average CV of 9.99%



Monocyte percentage

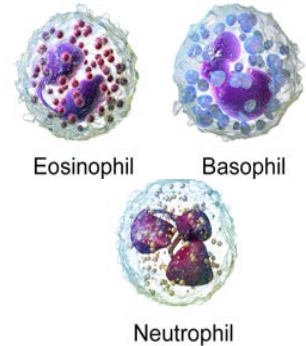


Monocyte Percentage, CV %

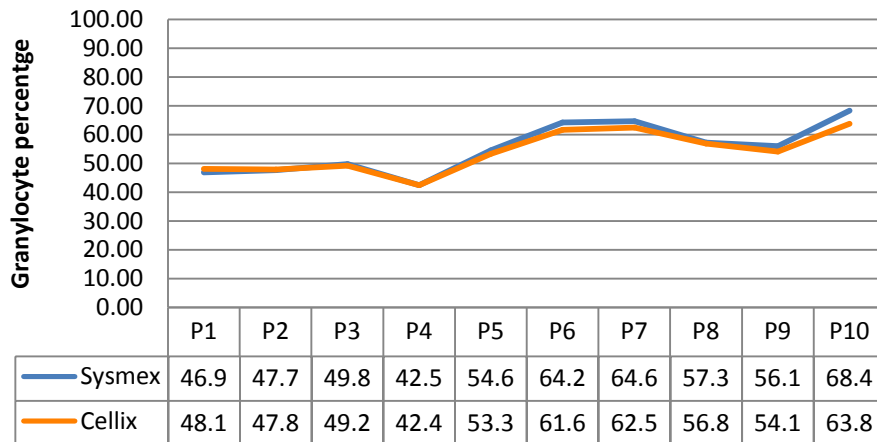


Benchmarking Inish against Sysmex XP-300:

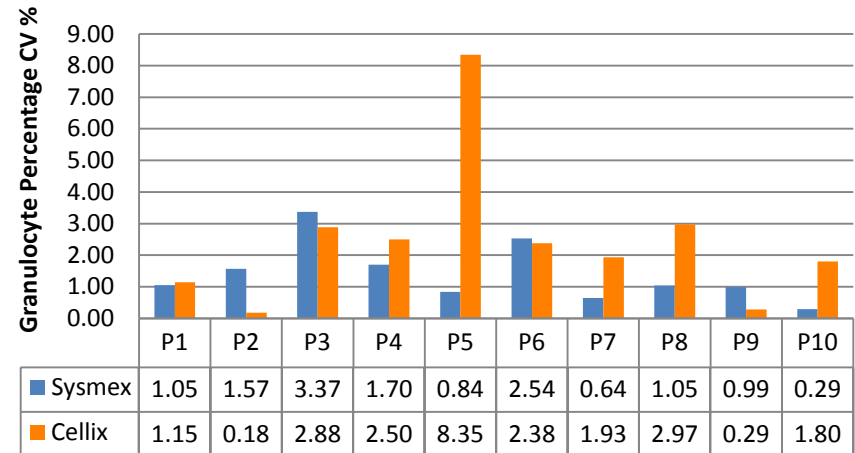
- **Granulocyte %:** Cellix's Inish correlates with Sysmex XP-300
- Inish: average of CV 2.44%
- Sysmex: average CV of 1.40%



Granulocyte percentage

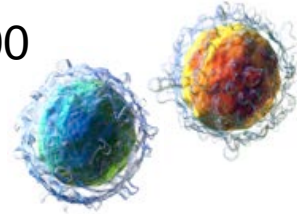


Granulocyte Percentage, CV %

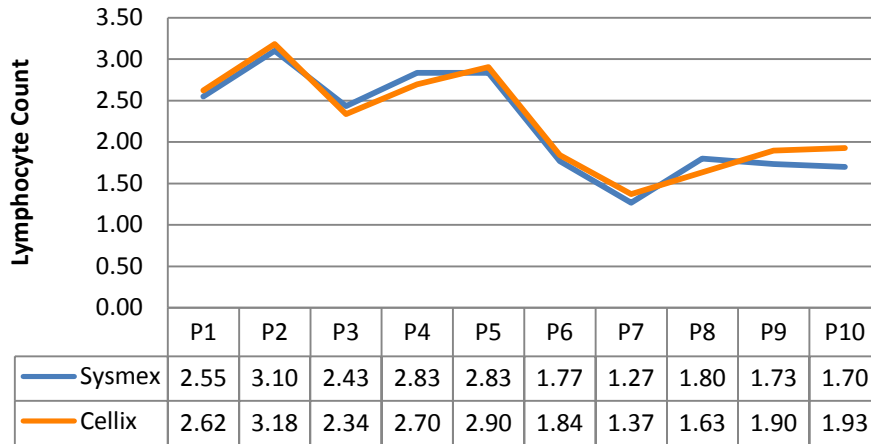


Benchmarking Inish against Sysmex XP-300:

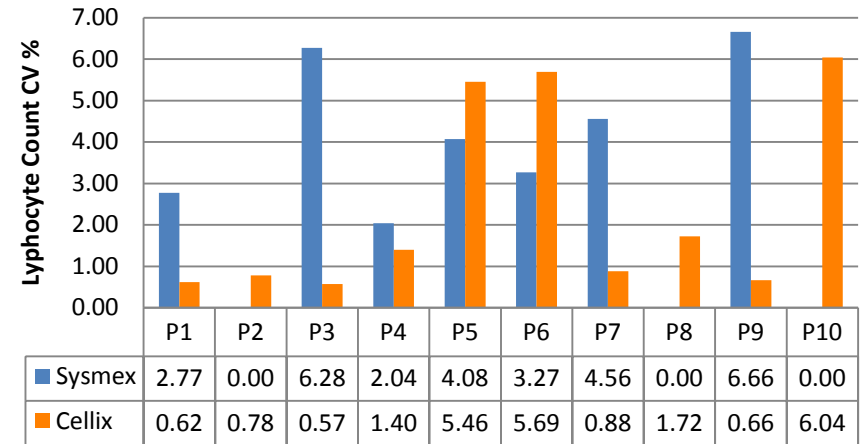
- **Lymphocyte count:** Cellix's Inish correlates with Sysmex XP-300
- Inish: average of CV 2.38%
- Sysmex: average CV of 2.97%



Lymphocyte Count *10³/μl

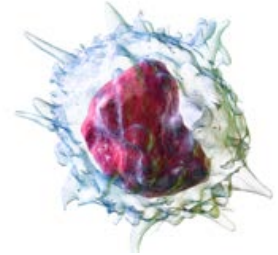


Lymphocyte Count, CV %

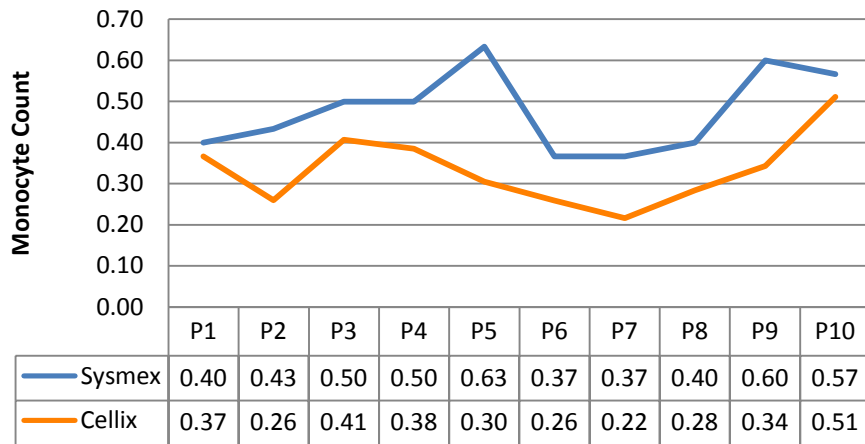


Benchmarking Inish against Sysmex XP-300:

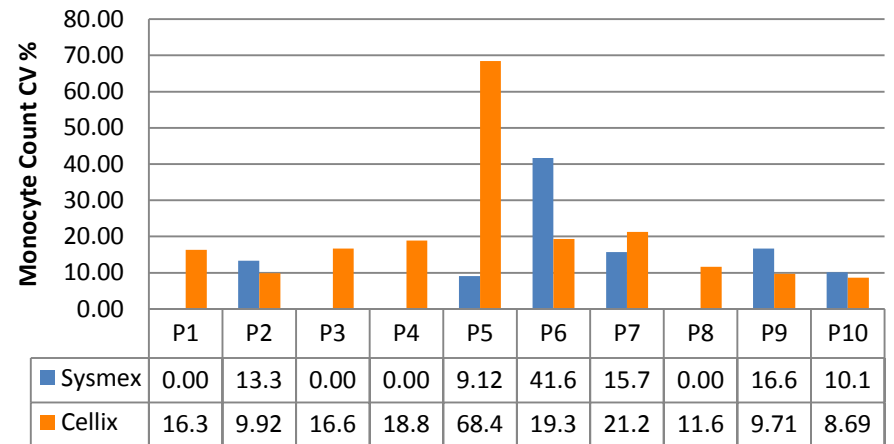
- **Monocyte count:** Cellix's Inish does not correlate with Sysmex XP-300
- Inish: average of CV 20.05%
- Sysmex: average CV of 10.67%
- Sysmex counts are very discreet (0.4,0.5,0.6 *10³/μl etc)



Monocyte Count *10³/μl

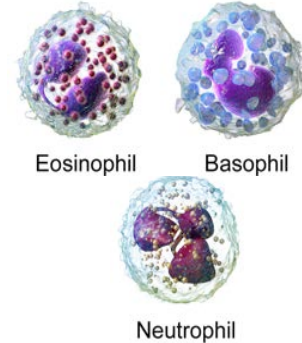


Monocyte Count, CV %

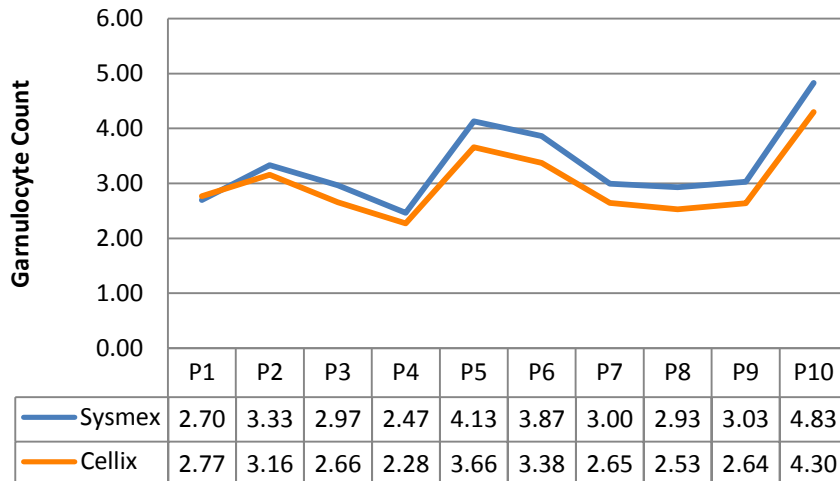


Benchmarking Inish against Sysmex XP-300:

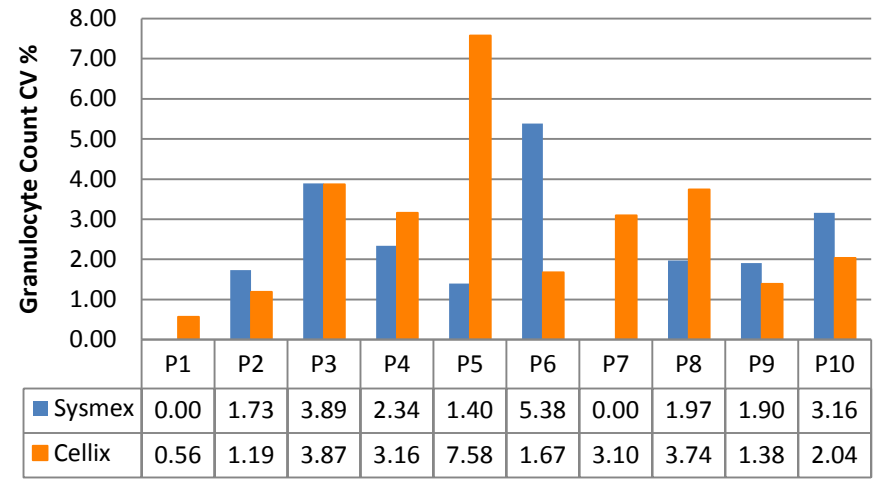
- **Granulocyte count:** Cellix's Inish correlates with Sysmex XP-300
- Inish: average of CV 2.83%
- Sysmex: average CV of 2.18%



Granulocyte Count *10³/μl



Granulocyte Count, CV %



For more information, please contact us at:

Contact Details:

Tel: +353 (1) 4500 155

Email: info@cellixltd.com

Web: www.cellixltd.com